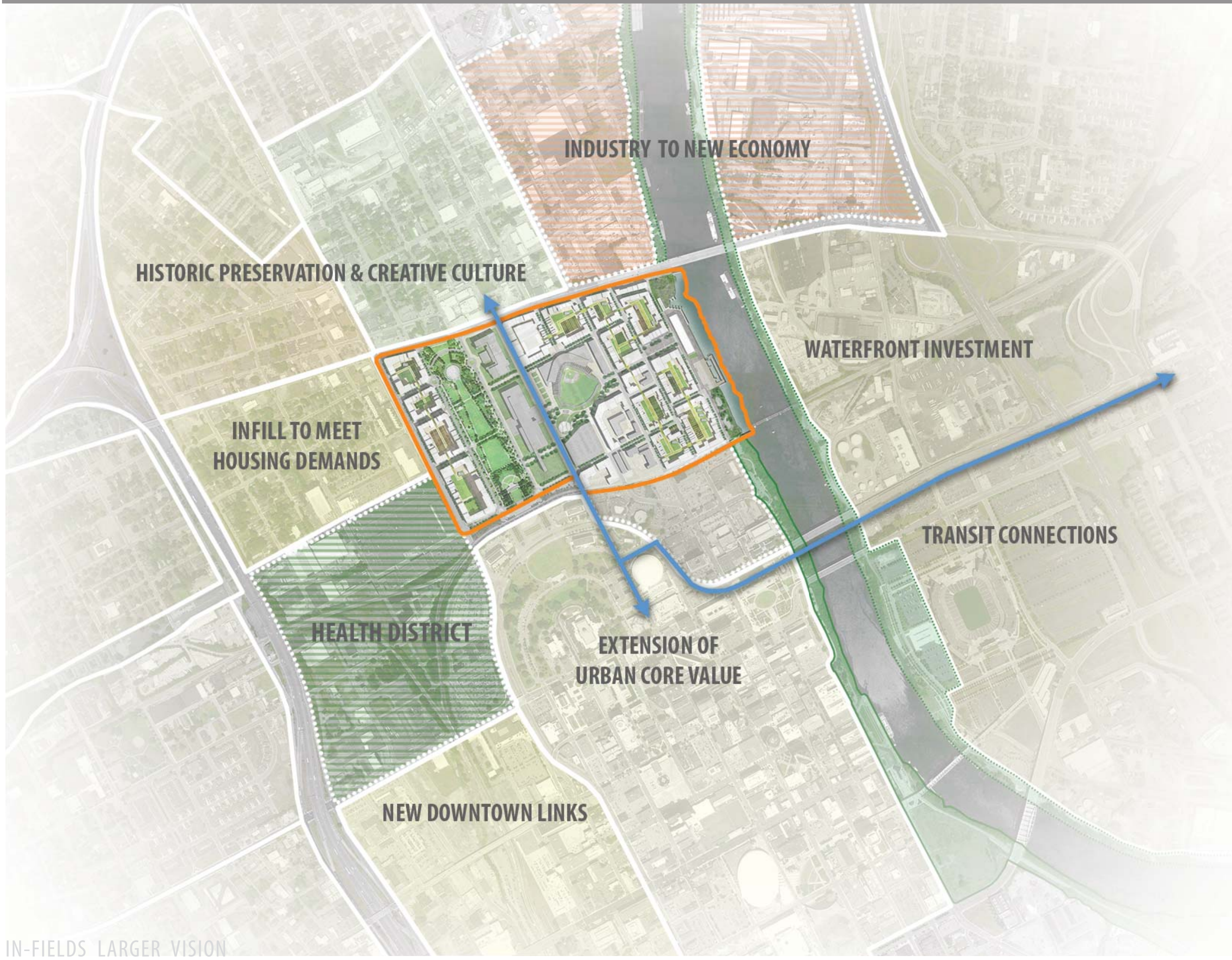
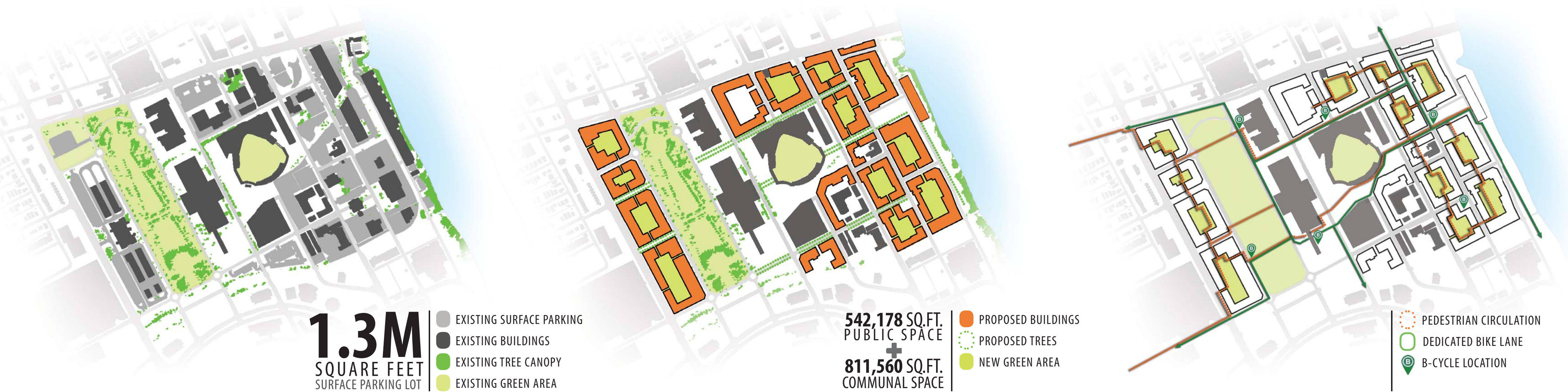
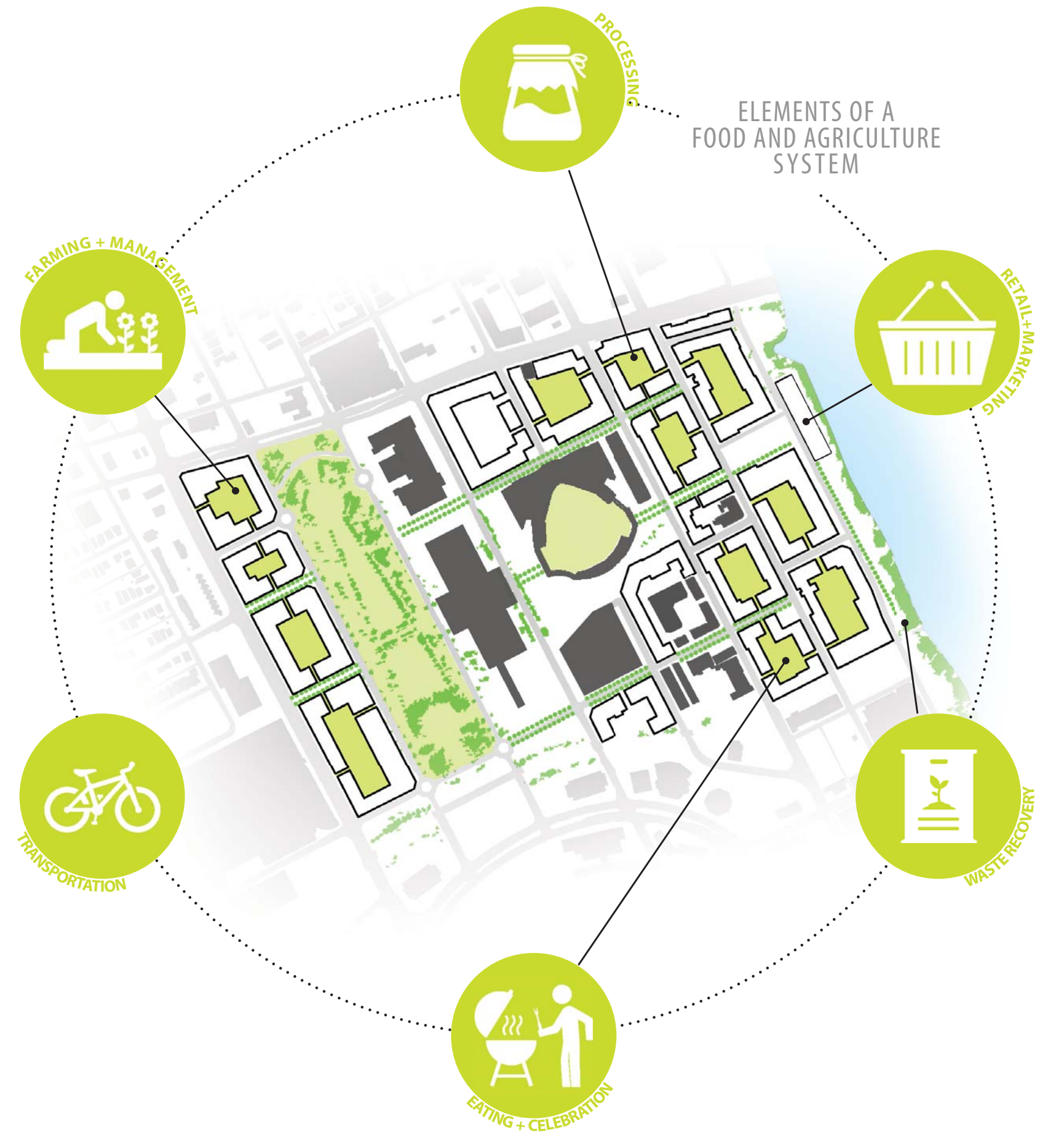


IN FIELDS

CULTIVATING WELLNESS AND COMMUNITY IN NASHVILLE'S URBAN CORE



IN-FIELDS LARGER VISION



MIDBLOCK AGRICULTURAL GARDEN



- BEETS
- HERBS
- APPLES
- SCALLIONS
- CABBAGE
- TURNIPS
- MUSHROOMS
- HOT PEPPERS

HEALTH

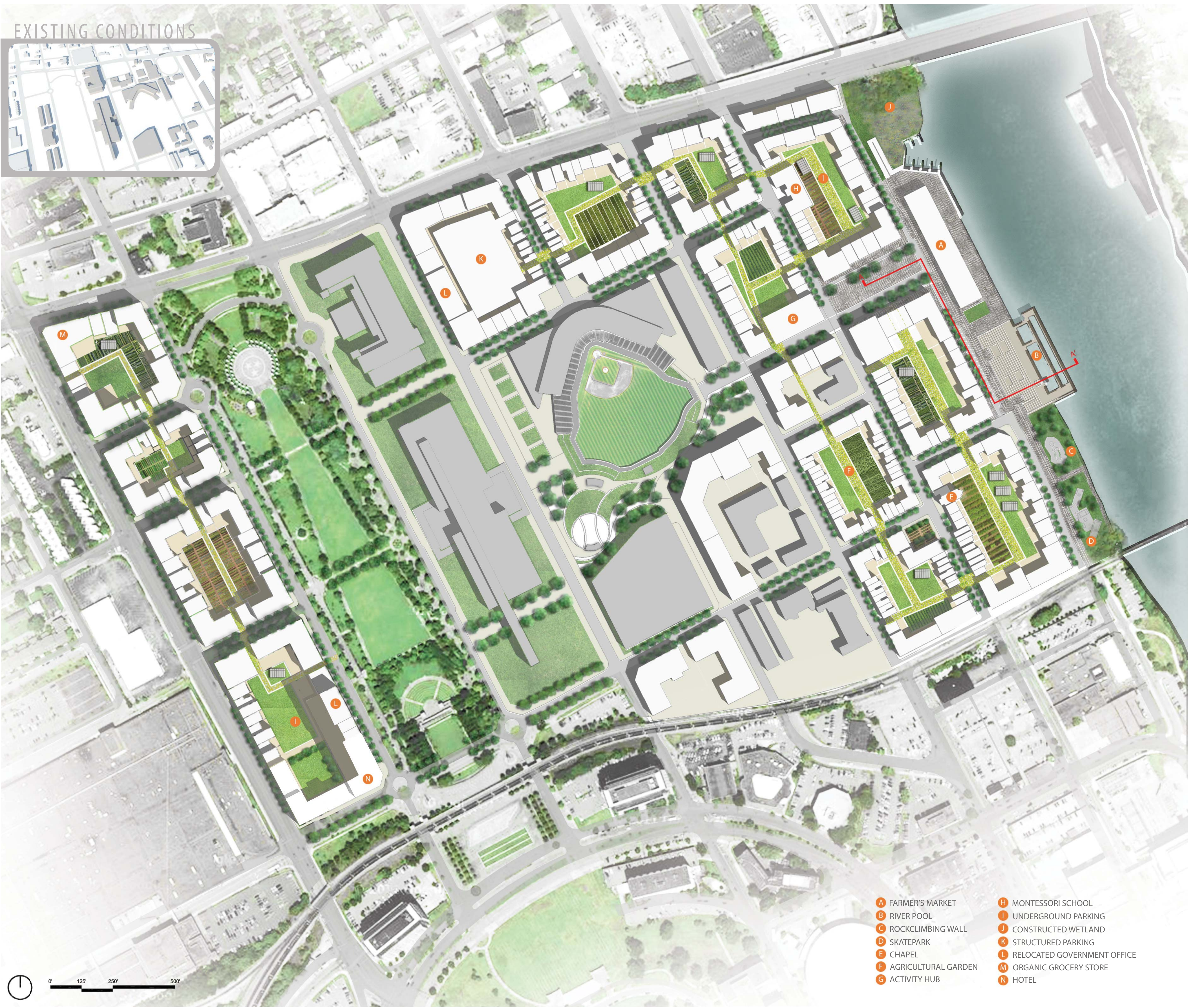
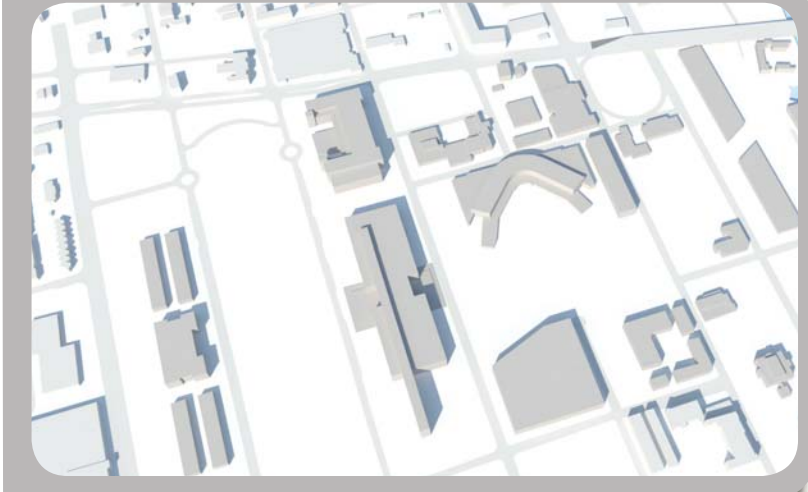
INCLUSIVE MIXED-INCOME, TRANSIT-ORIENTED, PUBLIC PARKS AND FACILITIES

INTEGRATED GREENWAY CONNECTIVITY, ON-SITE FOOD PRODUCTION, ADAPTIVE REUSE

INFORMATIVE AGRICULTURAL TRAINING, EDUCATION, CULTURAL FACILITIES

INSPIRING EMBRACING LOCAL HERITAGE, NEW URBAN DESTINATION, DESIGN FOR ACTIVE-LIVING

EXISTING CONDITIONS



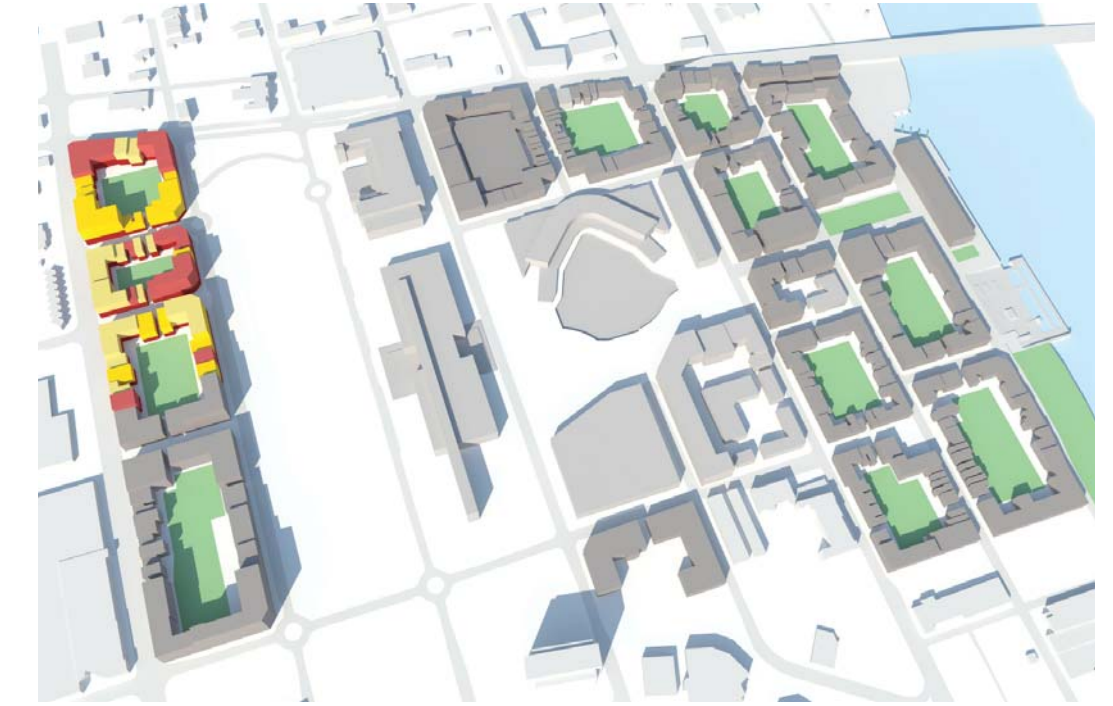
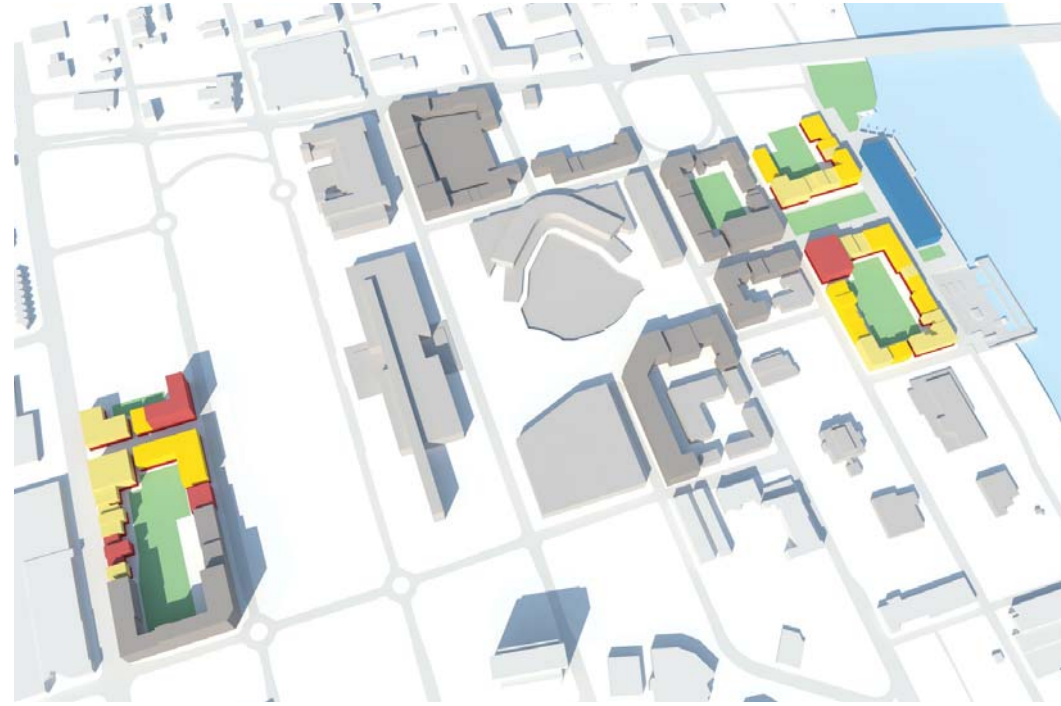
- A FARMER'S MARKET
- B RIVER POOL
- C ROCKCLIMBING WALL
- D SKATEPARK
- E CHAPEL
- F AGRICULTURAL GARDEN
- G ACTIVITY HUB
- H MONTESSORI SCHOOL
- I UNDERGROUND PARKING
- J CONSTRUCTED WETLAND
- K STRUCTURED PARKING
- L RELOCATED GOVERNMENT OFFICE
- M ORGANIC GROCERY STORE
- N HOTEL

PHASE I: SPROUTING

PHASE II: TAKING ROOT

PHASE III: BLOOMING

PHASE IV: MATURATION



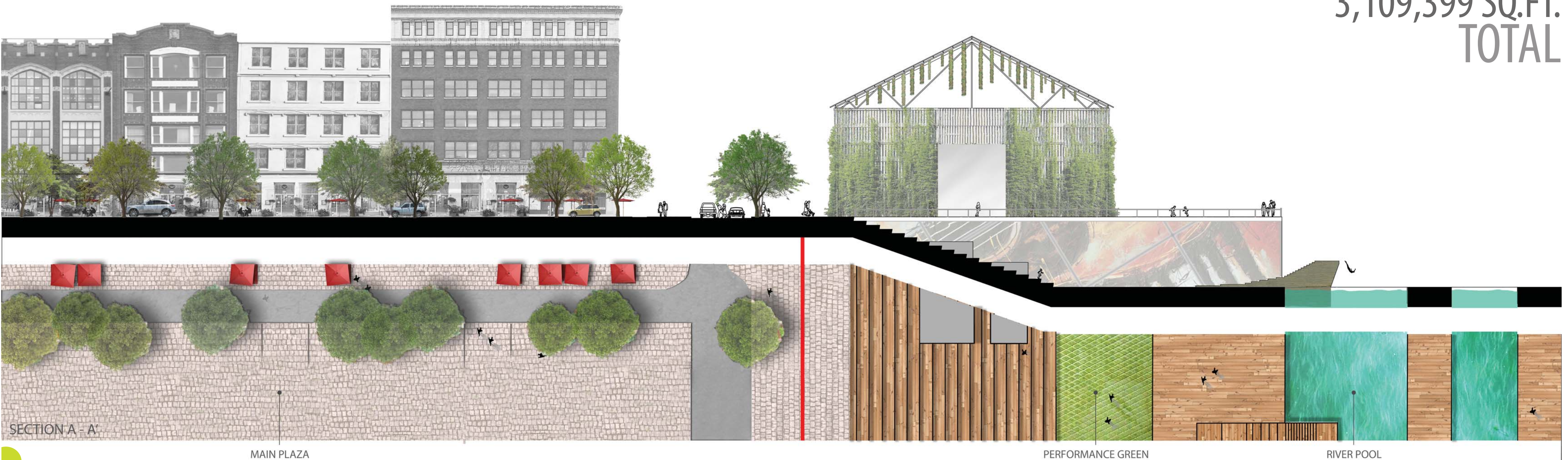
RESIDENTIAL: RENTAL	362,064 sq.ft.
RESIDENTIAL: FOR SALE	95,583 sq.ft.
HOTEL	173,107 sq.ft.
OFFICE	157,127 sq.ft.
RETAIL	203,885 sq.ft.
CIVIC	66,185 sq.ft.
PARKING STRUCTURE	141,000 sq.ft.

RESIDENTIAL: RENTAL	146,527 sq.ft.
RESIDENTIAL: FOR SALE	74,973 sq.ft.
OFFICE	76,172 sq.ft.
RETAIL	123,212 sq.ft.
PARKING STRUCTURE	88,485 sq.ft.

RESIDENTIAL: RENTAL	318,124 sq.ft.
RESIDENTIAL: FOR SALE	111,740 sq.ft.
HOTEL	6,526 sq.ft.
OFFICE	317,126 sq.ft.
RETAIL	59,539 sq.ft.
CIVIC	30,440 sq.ft.

RESIDENTIAL: RENTAL	146,343 sq.ft.
RESIDENTIAL: FOR SALE	46,299 sq.ft.
OFFICE	148,528 sq.ft.
RETAIL	157,853 sq.ft.

3,109,399 SQ.FT. TOTAL



SECTION A - A

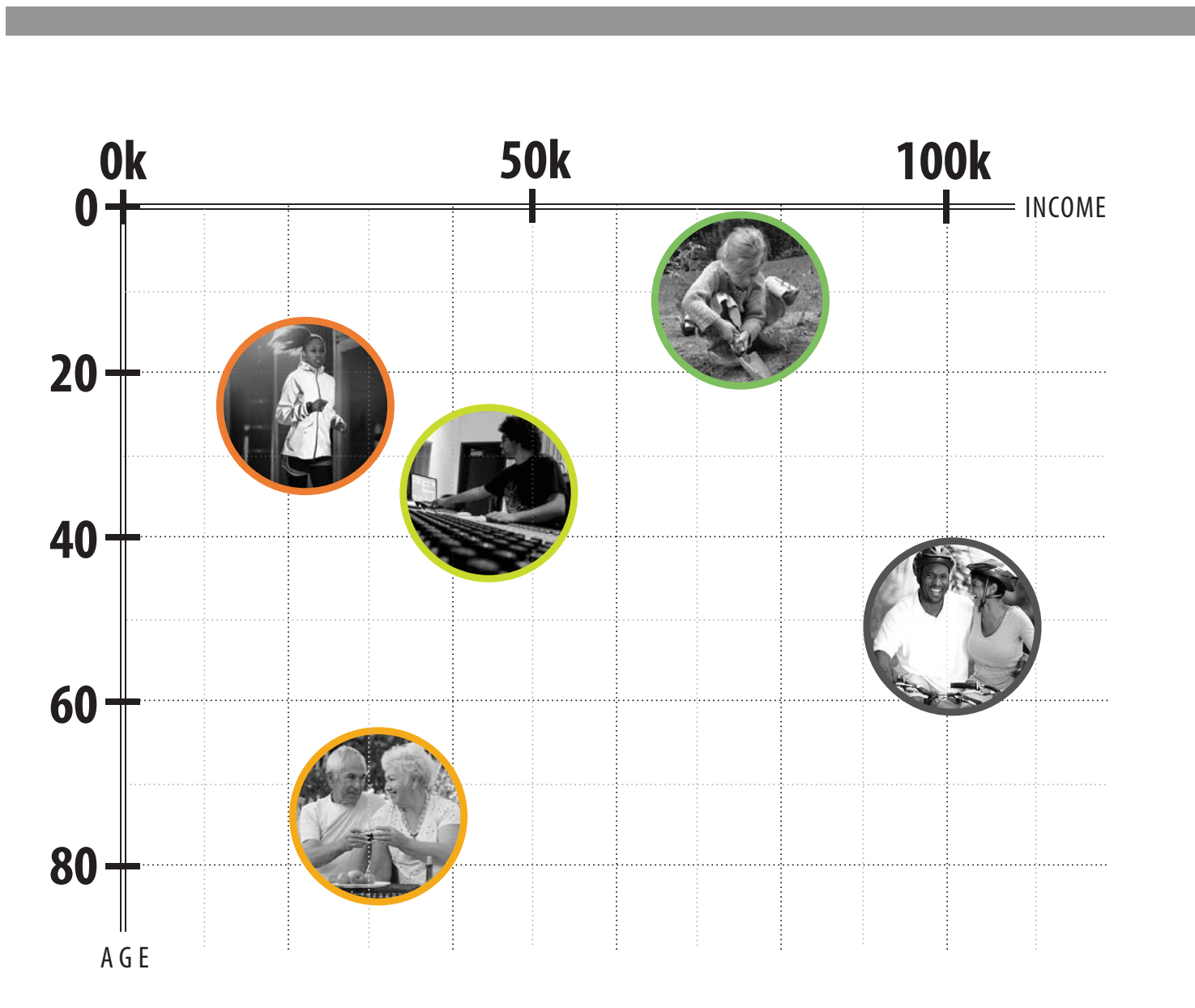
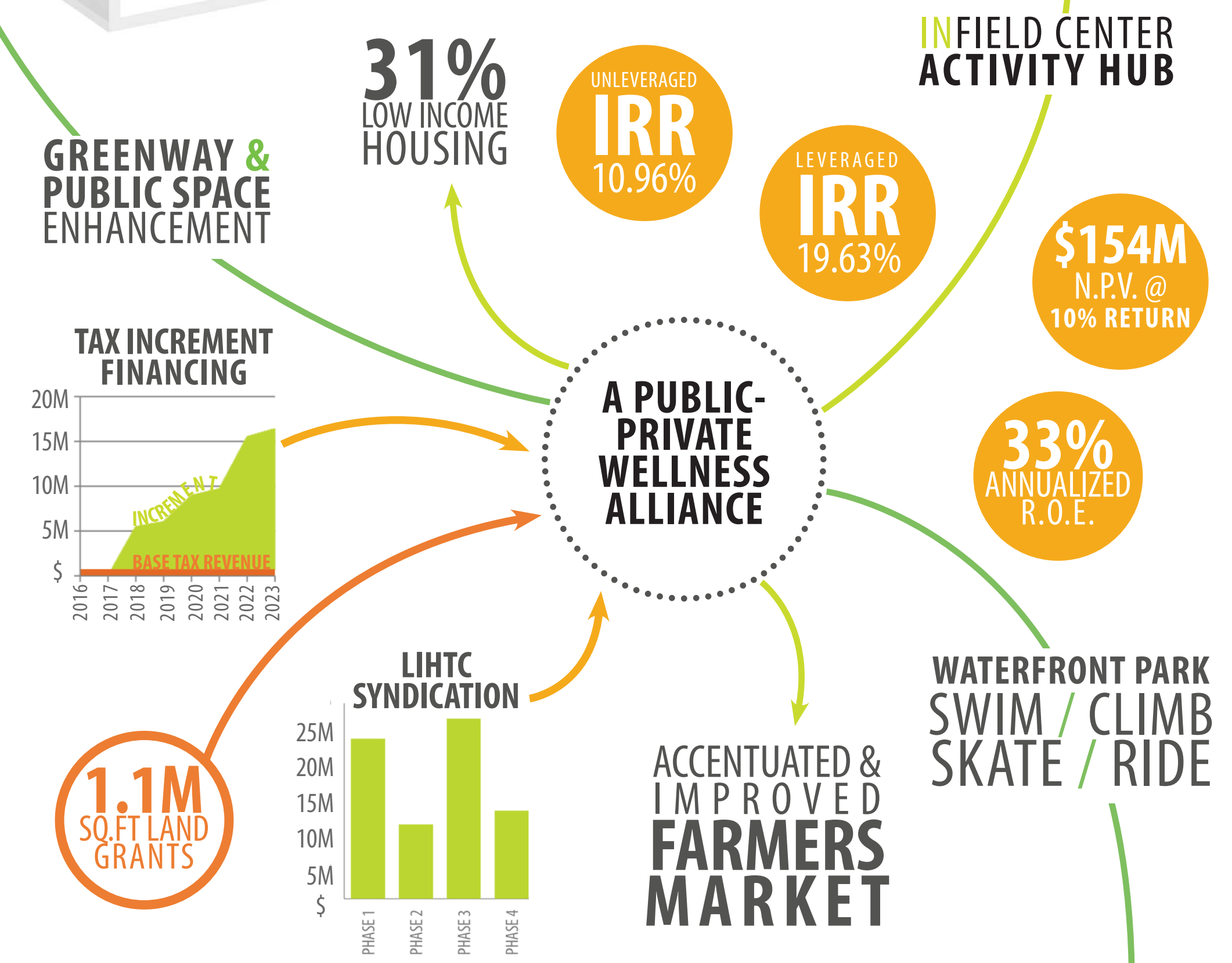
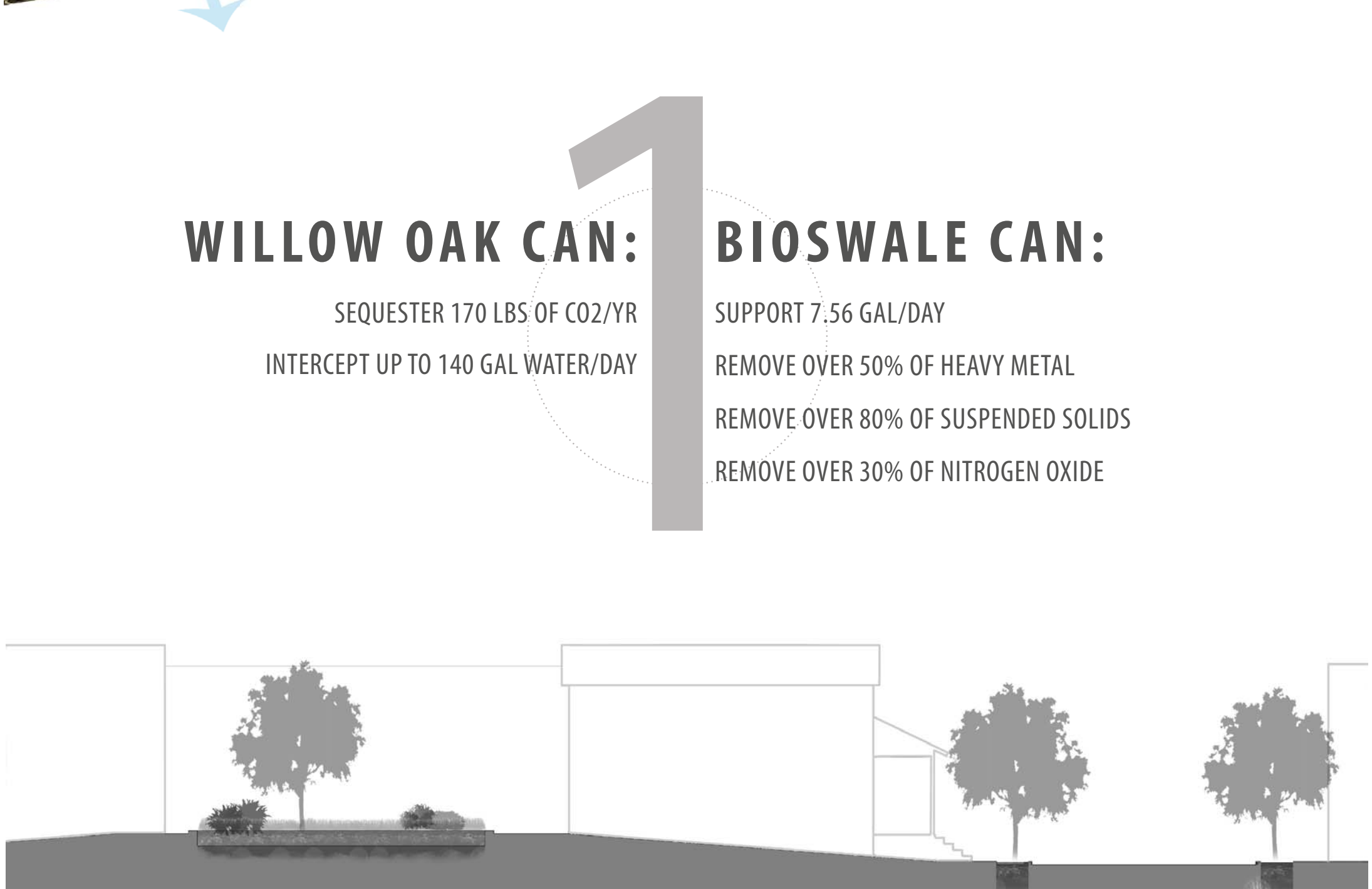
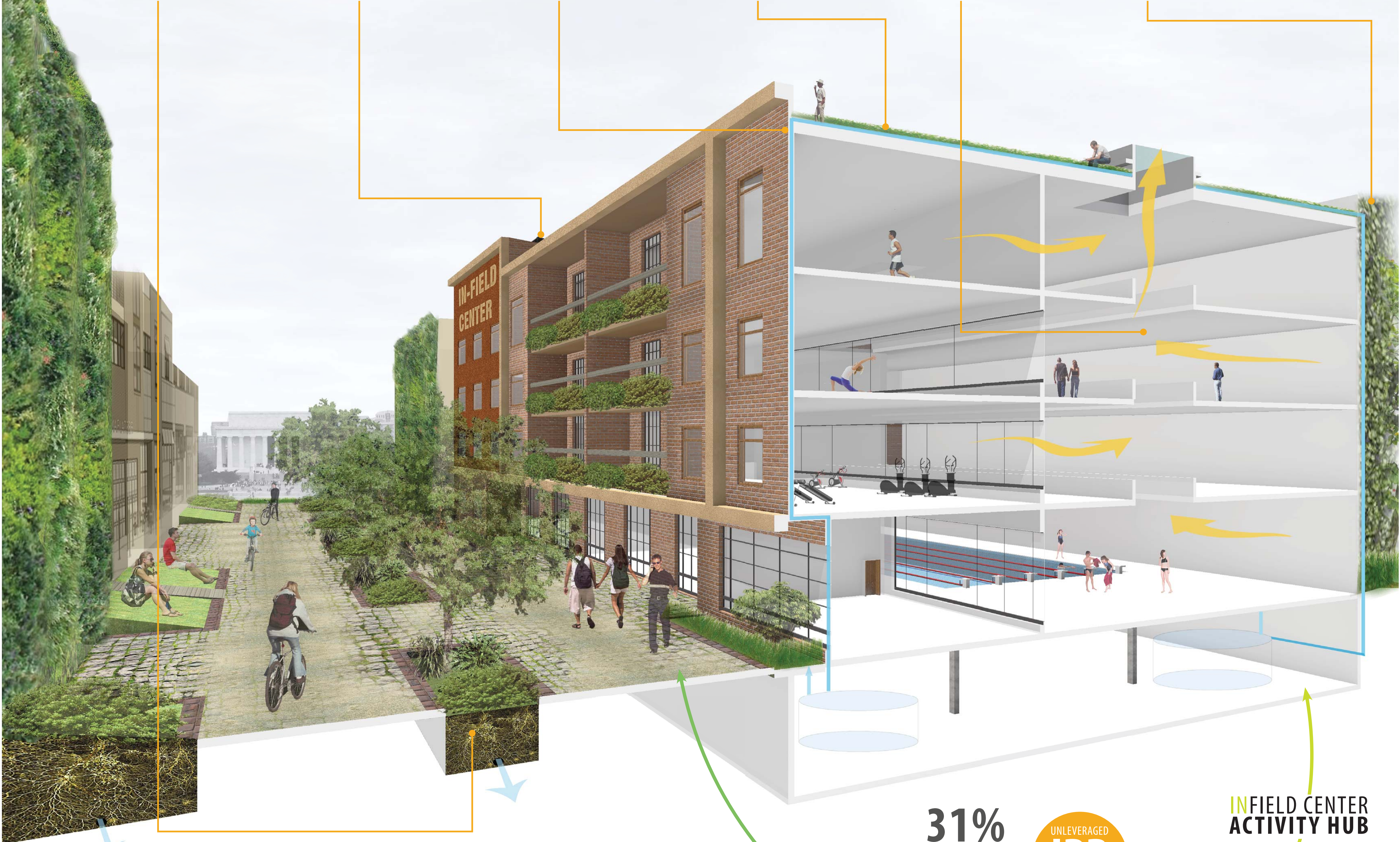
MAIN PLAZA

PERFORMANCE GREEN

RIVER POOL

SERVING AS A PRECEDENT FOR FUTURE CENTER-CITY INFILL DEVELOPMENT, INFIELDS SIGNIFICANTLY DECREASES URBAN RESIDENTS' DEPENDENCY ON OUTSIDE FOOD SOURCES AND ENHANCES THEIR MENTAL, PHYSICAL, AND SPIRITUAL WELL-BEING THROUGH THE ESTABLISHMENT OF INTEGRAL CONNECTIONS BETWEEN CITY AND NATURE

- BIO-SWALE
- SOLAR PANELS
- STORMWATER MANAGEMENT
- GREEN ROOF
- STACK EFFECT
- HYDROPONICS WALLS



- INHABITANT SPECTRUM**
- Organic Restaurant Waitress**
Shares rent subsidized unit with family
Enjoys a three-minute walking commute
 - Empty Nesters**
Downsized to a riverfront condominium
Tend to flowers and vegetables in their shared mid-block garden
 - Vanderbilt Graduate**
Spends his nights in a micro-unit rental apartment
Works as a sound engineer for a local record label
 - First Grader**
Learns about food production and processing at the Montessori School
Mom runs a healthcare analytics firm on Jefferson St.
 - Middle-aged Couple**
Moved up to a fee-simple townhouse
Natural Science Professors at Fisk University

